



Svarna Realities LLP


Creating Dreams & Destiny into Reality

**Builders
Contractors
Developers
Real Estate**





Moving communities toward a better tomorrow



From humble beginning,
Fuelled by determination,
Sparked by imagination,
and powered by dedication,
We have seen our group diversify,
expand and exponentially grow
in what could be best expressed
as an outward radiation of energy
in geometric progression.
We're now moving into
a new realm of creation



Svarna Realities LLP

Builders | Contractors | Developers | Real Estate

About Us

We are your one-stop solution provider for:

- Redevelopment of Society
 - SRA projects
- Affordable Housing
 - N.A. Plots
 - Township
- Holiday Homes
- Civil & Building construction contractors
 - Turnkey Interior works
- Project Management consultants
- Structural repairs & Rehabilitation
 - Engineers

The SVARNA REALTIES LLP and its Associates has been in the construction business for over 25 years and have always believed that its success comes from its customers.

In recent years, SVARNA REALTIES LLP has ventured into Realty by offering an ensemble of products-residential township, holiday homes, commercial complexes, warehousing, as well as socially responsible activities like slum development projects. The Group is putting to good use its considerable Land bank at prominent locations across Maharashtra Mumbai and Suburban Mumbai.

Sharp-focusing on the most critical residential segment has helped to bring together the group's strengths and put is on a trajectory of fast growth.

We at the SVARNA REALTIES LLP cater to people's needs, provide value for money for quality construction and ensure timely delivery. Our aim is to improve quality of life through provision of thoroughly modern amenities and infrastructure facilities.

The capabilities of SVARNA REALTIES LLP include identification/selection of properties, feasibility studies, available infrastructure/future development, selection of architects, consultants, legal vetting, preparation of schemes for commercial and residential complexes, construction, project management, marketing, sales and customer service. The company takes particular care in ensuring that its projects feature perfect vastu and a clear title so as to give buyers a hassle-free and happy ownership.

VISION - A vision to take the world ahead

Guiding Principles

To achieve recognition, leadership, dominance and prominence in every business venture, while focusing on the customer.

Company Statement

“SVARNA REALTIES LLP” will provide value-added Construction Services by creating successful partnerships, exceeding expectations and delivering an exceptional product of luxury & high class quality.

Our Mission

- Exceed customer expectations and gain long-term trust.
- Create product differentiation and innovation with unmatched product quality.
- Achieve operational excellence in every step.
- Enhance relationships.
- We are a vibrant and progressive company delivering exceptional quality and outstanding service.
- We cater to the specific needs of each client, offering ideas and innovative solutions.
- We provide Construction Management, Project Management and General Contracting services for both commercial and residential clients.

Code of Ethics

We deliver quality construction services on time and within budget.

We develop respectful and productive relationships with our clients, vendors and employees.

We ensure the health, safety and wellness of every person on our job sites.

We value innovative thinking and creative problem solving.

We are committed on reducing our carbon footprint.

We are committed toward social Responsibility.

We are committed towards environment protection.

We are committed for innovation towards substantial development.

We are committed towards Go green concept.

We are committed towards customer satisfaction.



Svarna Realities LLP

Builders | Contractors | Developers | Real Estate

GROUP OF COMPANIES

- 1) RVJ CONSTRUCTION CO. PVT. LTD.
- 2) VIRENDRA TIWARI AND OTHERS
- 3) VRH INFRA PARADISE ON EARTH LLP
- 4) RADISSON DEVELOPERS CO PVT LTD
- 5) SVARNA REALTIES LLP

VIJAYLAXMI GROUP COMPANIES

- 6) AGM VIJAYLAXMI VENTURE LLP (JV COMPANY)
- 7) AGM VIJAYLAXMI ELITE LLP (JV COMPANY)
- 8) VIJAYLAXMI VTO
- 9) VVR INFRACON LLP



Delivering an exceptional product



Svarna Realities LLP

Builders | Contractors | Developers | Real Estate

services



Construction Management

We offer professional Construction Management services in all areas of construction including planning, design, pre-construction and post- construction phases. These services are offered with the objective of concluding a successful project in terms of quality, cost, time and scope of Work.



Project Management

Our select team of Project Managers is responsible for the overall planning, coordination and control of a project from inception to completion. We aim to meet a client's requirements in order to produce a functional and financially viable project that is completed on time and on budget.



Redevelopment

- We undertake Redevelopment of Co-operative Housing Society.
- We undertake Slum Rehabilitation Projects.
- We undertake MHADA housing scheme.
- We undertake Self Development Scheme.
- We undertake Township schemes.
- We undertake second home schemes.



Our skilled technical engineering team has over a decade of experience and is committed and passionate in dealing with each project and executing them.



Renovations

Construction renovations can be very minor or large enough to disrupt a business or household. We make every effort to make the impact of a renovation as painless as possible - keeping to a schedule and ensuring that communication between the Project Manager and client is open and clear.



Structural Repairs

We are also involved in structural repair activities that include Rehabilitation, Restoration & Repairs of structures, Corrosion Control, Restoration of Heritage Structures, Guniting, External Finishes, Waterproofing, External & Internal Painting, Elevational Treatments, etc. We are also adept in working with various polymer plasters.



Svarna Realities LLP

Builders | Contractors | Developers | Real Estate

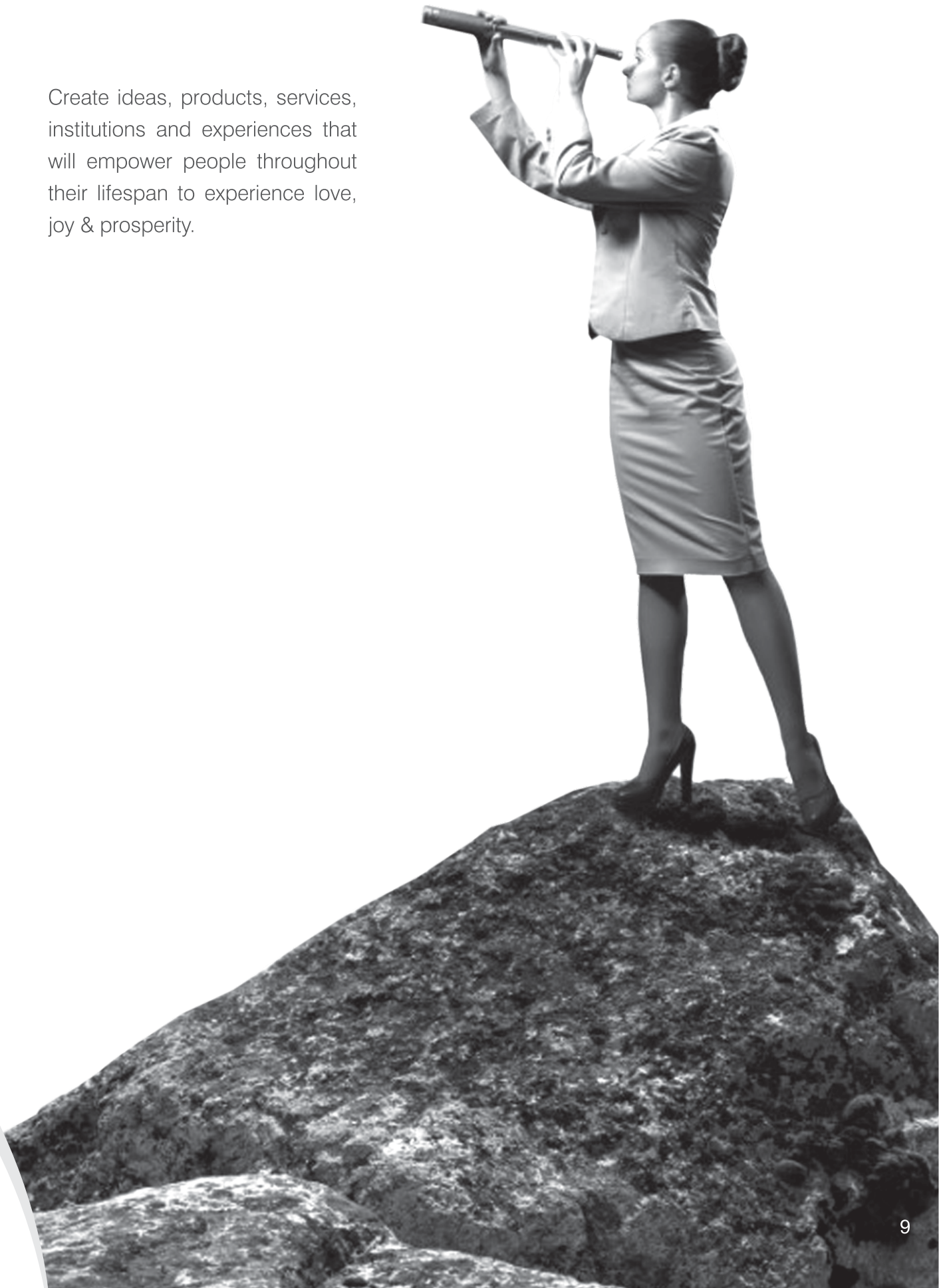
Svarna Realities LLP are not just a set of beliefs and mottos, they are tangible metrics that we use to measure our patron's expectations and exceed our own.

In the pursuit of excellence, our values have gone ahead to reward every customer a life-enriching experience every time.



EXCELLENCE

Create ideas, products, services,
institutions and experiences that
will empower people throughout
their lifespan to experience love,
joy & prosperity.



BUILD THE TRUST





Svarna Realities LLP

“COMPLETED
PROJECT”

Project Undertaken

Completed Projects

SAI ELEGANCE (IOD No. CE/8693WS/AK, DATED: 22/08/2014)

Residential Project



CTS No. 89/A & 90, Village Mulgaon Near Ambika Apts, Mahakali Caves Road, Andheri (E), Mumbai - 400 093. Located in the heart of Mumbai's well established suburb, Andheri East, easily approachable from western express highway as well as Powai, Sai Elegance is a high end residential development in Mahakali caves road, Andheri (E). The project provides adaptable planned project layout, elegant lobby interiors and exteriors all in solid foundation.

The elegantly designed hill facing 2 and 3 BHK flats maintain the luxury and privacy of your family. Its strategic location with proximity to shopping area, restaurants, banks, hospitals, schools, temples (Satya Sai Temple), railway station, airport, a well-developed industrial zone nearby and other establishments add few more boons for the residents.

The location is quite good, the building is within a good residential colony and convenient commuting (5 min from WEH, 10 min from Andheri (E) station and 10 min from JVLR, 5 min from Metro).

The ground floor of the building houses MC Donald, Malvan Katta, Belgium Waffle, Shahi Darbar.

The Building C Wing is G+6 storied high with adequate parking in double basement.

The Building A & B Wing is G +6 storied high with adequate parking in stack parking system.

The Project Sai Elegance C Wing is approximately 30000 Sq ft built up area.

The Project Sai Elegance A & B Wing is approximately 30000 Sq ft built up area.

Completed Projects

GREEN LAWN APARTMENT (IOD No. – CHE/7833/BP(WS)/AP)

Residential Project



CTS No. 294, Opp. St. Pious College, Aarey Road, Goregaon (E), Mumbai - 400 063. Green Lawns is a unique place to live in, surrounded by the lush greenery and large open spaces. Green Lawns is situated on the main 18.30 m wide Aarey Road overlooking the lush greens of St. Pius Ground. Green Lawns is be an ideal place for a relaxed evening with your family.

Green Lawns is on the main 18.30 meter wide Aarey Road connecting Western Express Highway and Goregaon East Railway Station. Living at Green Lawns, you would be just half a km away from Goregaon East Railway Station, 300 meters from Western Express Highway and 200 m away from the Metro Station.

Proximity to World class malls :

Oberoi Mall is a choice destination giving a superior shopping and leisure experience. Four sprawling levels of designer fashion apparel, high-end accessories, fine jewellery, watches, perfumes, optical, home-ware, electronics and so much more. With over 500 brands to choose from, avid shoppers can delight in the breathtaking variety, avail of varied offers and enjoy extensive shopping sprees.

The Hub situated just 1.6 Kms from Aarey Greens, promises a fun time for you and your family. The mall houses several eating joints like McDonalds, China House, Movietime Multiplex, Food Bazaar and other essential shops for spending a quality time with your family.

The Building is G +7 storied high with adequate parking

The Project Green Lawn Apartment is around 70000 Sq ft built up area.

Project Undertaken

Completed Projects

AMBIKA APARTMENT

Residential Project



Ambika Apartment is a residential cum commercial development.

Address:

CTS No. 89, Village Mulgaon, Near Mac Donalds, Mahakali Caves Road, Andheri (E), Mumbai - 400 093. Located in the heart of Mumbai's well established suburb, Andheri East, easily approachable from western express highway as well as Powai.

Its strategic location with proximity to shopping area, restaurants, banks, hospitals, schools, temples (Satya Sai temple), railway station, airport, a well-developed industrial zone nearby MIDC SEEPZ and other establishments add few more boons for the residents.

The ground floor of the building houses J & K Bank, Gulati Sweets, Mirwah Restaurant & other commercial establishments.

The project provides adaptable planned project layout, elegant lobby interiors and exteriors all in solid foundation.

The Building is G+6 storied high. The location is quite good, the building is within a good residential colony and convenient commuting (5 min from WEH, 10 min from Andheri (E) station and 10 min from JVLR, 5 min from Metro).

The Project Ambika Apartment is around 60000 Sq ft built up area.

Completed Projects

HOLY CROSS APARTMENT

Residential Project



The Project Holy Cross apartment is situated at CTS No. 231B, Village Mogra, Service Road of Western Express Highway, Parsi Panchayat Road, Andheri (E), Mumbai - 400 069. Located in the heart of Mumbai's well established suburb Andheri East, easily approachable from western express highway as well as Powai, Holy Cross Apartment is a residential development on Parsi Panchayat Road, Andheri (E). Its strategic location with proximity to shopping area, restaurants, banks, hospitals, schools, temples (Satya Sai temple), railway station, airport, a well-developed industrial zone nearby MIDC SEEPZ and other establishments add few more boons for the residents.

The Building is G+7 storied high. The location is quite good, the building is within a good residential colony and convenient commuting (1 min from WEH, 5 min from Andheri (E) station and 5 min from JVL R, 5 min from Andheri Metro Station).

The Project Holy Cross Apartment is around 30000 Sq ft built up area.

Project Undertaken

Completed Projects

NOBLE APARTMENT (IOD No. HECR/164/05-06, O.C. Dt. 05/12/2007)

Residential Project



The Project Noble apartment is situated at CTS No. 3035/3037 Yashwant Nagar, Behind Vakola Church, Vakola, Santacruz (E).

Situated in the heart of Vakola, Noble Apartment is very Close to Grand Hyatt Hotel and Mumbai University. One of the most prime commercial hub BandraKurla Complex (BKC) is just 5 minutes drive away from Noble Apartment. Located near the most inspiring corporate hub of BandraKurla Complex, it reduces commuting time drastically and adds hours to your time with your near and dear ones. The highway connects you to the national and international airport, both being a short ride away. In an emergency or a regular checkup, the famous Asian Heart Hospital at BKC will make you sleep well at night.

Shopping Centres, Local Market, Banks, Cinema & Entertainment are all just so very close.

DhiruBhai Ambani International School, St. Anthonys School and St. Charles High School are also at close proximity. The Mumbai Cricket Association (MCA) and MIG Cricket Ground is also just a few minutes away. At Noble apartment every corner is carved with a sheer objective of creating a modest home for a middle class family, for their convenience and comfort. Interiors speak of imaginative taste. It reflects the attitude and mindset that transcends the inner being – be it the flooring, exotic doors, switches, etc.

The Project Noble Apartment is around 30000 Sq ft built up area.

Completed Projects

SVARNA KOJAGIRI (IOD No:- CHE/WSH/0208/P/337 NEW, O.C. Dt. 23/12/2019)

Residential Project



The Project Svarna Kojagiri apartment is situated at CTS No. 302, Near Hanuman Mandir, Pahadi School No. 1, Jay Prakash Nagar, Goregaon (E), Mumbai - 400 063.

Svarna Kojagiri located at near Hanuman Mandir Pahadi School No. 1, Jay Prakash Nagar, Goregaon (E), Mumbai - 400 063. 2 Min. from Western Express Highway and 2 Min. from Goregaon East Railway Station and 5 Min. from NESCO Metro Station.

It is situated at Jay Prakash Nagar one of the most silent and peaceful area's of Goregaon (E) with maximum crowd of middle class Maharashtrian. Jay Prakash Nagar has central gymkhana, community hall and various Nana Nani park in and around the area

Proximity to World class malls :

Oberoi Mall is a choice destination giving a superior shopping and leisure experience. Four sprawling levels of designer fashion apparel, high-end accessories, fine jewellery, watches, perfumes, optical, home-ware, electronics and so much more. With over 500 brands to choose from, avid shoppers can delight in the breathtaking variety, avail of varied offers and enjoy extensive shopping sprees.

The Hub situated just 1.6 Kms from Aarey Greens, promises a fun time for you and your family. The mall houses several eating joints like McDonalds, China House, Movietime Multiplex, Food Bazaar and other essential shops for spending a quality time with your family.

The Building is G + 9 storied with adequate Stack parking system.

The Project Svarna Kojagiri is around 30000 Sq ft built up area.

Project Undertaken

Completed Projects

SARASWATI APARTMENT

Residential Project



The Project Saraswati apartment is situated at Located in the heart of Mumbai's well established suburb, Andheri East, easily approachable from western express highway as well as Powai, Sarswati Apartment is a residential development on Parsi Panchayat Road, Andheri(E).

Its strategic location with proximity to shopping area, restaurants, banks, hospitals, schools, temples, Andheri (E) railway station, airport, a well-developed industrial zone nearby MIDC SEEPZ and other establishments add few more boons for the residents.

The project provides adaptable planned project layout, elegant lobby interiors and exteriors all in solid foundation.

The location is quite good, the building is within a good residential colony and convenient commuting (2 min from WEH, 5 min from Andheri (E) station and 10 min from JVLR, 5 min from Metro).

The Building is G+9 storied high.

The Project Saraswati Apartment is about 70000 Sq ft built up area.

Completed Projects

GOLD FIELD RESIDENTIAL COMPLEX

Residential Project



Gold Field Residential complex is a premium residential project. The complex is centrally located very close to Sion Railway station.

Restaurants, Shopping mall, Market and Mumbai's foremost and rapidly developing financial and professional Business District, BandraKurla complex. There is a Jain temple within the Complex.

Lush Green landscape: The apartments will have unobstructed view of greens Mangroves and Maharashtra Nature Park and Dharavi Sports Complex.

Work close to your Home: The complex is just 1.5 KM from BKC, Mumbai's foremost and rapidly developing financial and professional Business District, Bandra Kurla Complex. Great Connectivity Located just minutes away from the Eastern and Western express high way which connects all sectors of Mumbai.

The complex is also situated within a 15 minute drive from domestic airport.

The project is 1.5 KM from BKC, 1.5 Km from Western Express Highway, 400 Meters from Sion Railway Station, 700 Meters from Eastern Express Highway.

The Project Gold Field Residential Complex is around 10000 Sq ft built up area.



AREA UNDER CONSTRUCTION



Svarna Realities LLP

“ON-GOING
PROJECT”

Project Undertaken

On-going Projects

93 EAST (IOD No:- CHE/WS/4211/K/E/337 NEW)

Commercial Project



The Project 93 East Commercial Complex is situated at CTS No. 89A/3(PT) 90A(PT) Village, Mulgaon, Mahakali Caves Road, Andheri (E).

Commercial Offices

Located in the heart of Mumbai's well established suburb, Andheri East, easily approachable from western express highway as well as Powai, in Mahakali caves Road, Andheri (E).

93 East provides you the option to choose from flexible floor plans giving you the opportunity and freedom to select the best suitable space for your office or for investment.

Its strategic location with proximity to shopping area, restaurants, banks, hospitals, schools, temples Railway station, airport, a well-developed industrial zone nearby MIDC SEEPZ and other establishments add few more boons for the residents.

The location is quite good, the building is within a good Commercial Area and convenient commuting 5 min from WEH, 10 min from Andheri (E) station and 10 min from JVLR, 5 min from Metro.

The Building is G + 13 storied high commercial building with adequate parking in Tower parking system

The Project 93 EAST is around 100000 Sq ft built up area.

On-going Projects

AT COMMERCIAL (IOD No:- P-3492/2019/46/25 Of KE WARD)

Commercial Project



Boutique offices

The Project AT Commercial Complex is situated at CTS No 46/25, of Village Mulgaon ,Plot No 6/7, Mahal Industrial Estate, Mahakali Caves Road, Andheri (East) Mumbai 400093.

AT the heart of business located in Mahakali Caves Road, Andheri (East). Elegant 14 storied business landmark with flexible floor places. Premium office spaces starting 550 Sq. Ft onwards.

It is Situated opposite Pinnacle Business park.

At Commercial provides you the option to choose from flexible floor plans giving you the opportunity and freedom to select the best suitable space for your office or for investment.

Its strategic location with proximity to shopping area, restaurants, banks, hospitals, schools, temples Railway station, airport, a well-developed industrial zone nearby MIDC SEEPZ and other establishments add few more boons for the residents.

The location is quite good, the building is within a good Commercial Area and convenient commuting 5 min from WEH, 10 min from Andheri (E) station and 10 min from JVLR, 5 min from Metro.

The Building is G + 13 storied high with adequate parking.

The project is At Commercial around 250000 Sq ft built up area

FUTURE GOAL





Svarna Realities LLP

“UPCOMING
PROJECT”

Project Undertaken

Upcoming Projects

SHYAM SADAN (IOD No:-P-7215/2021/(413)/P/S ward)

Residential Project



The Project Shyam Sadan Apartment is situated at CTS No. 413, Plot no 32 Jayprakash Nagar Road No. 3 Goregaon East, Mumbai - 400063.

Shyam Sadan is located at Jayprakash Nagar, near Hanuman Mandir, Goregaon (East) connecting Western Express Highway and Goregaon East Railway Station. you would be just half a km away from Goregaon East Railway Station and Goregaon (East) Metro Railway Station, 300 meters from Western Express Highway.

It is situated at Jay Prakash Nagar one of the most silent and peaceful area's of Goregaon (E) with maximum crowd of middle class Maharashtrian.

It has central gymkhana, community hall and various Nana Nani park in and around the area.

It is also very close to Hub Mall, Oberoi Mall, Metro Station.

Proximity to World class malls :

Oberoi Mall is a choice destination giving a superior shopping and leisure experience. Four sprawling levels of designer fashion apparel, high-end accessories, fine jewellery, watches, perfumes, optical, home-ware, electronics and so much more. With over 500 brands to choose from, avid shoppers can delight in the breathtaking variety, avail of varied offers and enjoy extensive shopping sprees.

The Hub situated just 1.6 Kms from Shyam Sadan, promises a fun time for you and your family. The mall houses several eating joints like McDonalds, China House, Movietime Multiplex, Food Bazaar and other essential shops for spending a quality time with your family.

The Building is G + 10 storied with adequate parking.

The Project Shyam Sadan is around 30000 Sq ft built up area.

Upcoming Projects

AAREY GREEN APARTMENT (IOD No:-CHE/7833/BP(WS)/AP)

Residential Project



Aarey Greens is a perfect blend of aesthetics, greenery, being close to nature and excellent connectivity, urban facilities and modern living; where you can imagine your dream home in the heart of Goregaon East.

Aarey Greens is a unique place to live in, surrounded by the lush greenery and large open spaces. Aarey Greens is situated on the main 18.30 m wide Aarey Road overlooking the lush green of Aarey Colony on two sides and greens of St. Pius Ground on other side. Aarey Greens will be an ideal place for a relaxed evening with your family.

Indulge in lush green luxury, rooftop gym, clubhouse, plunge pool and garden! Aarey Greens offers world class amenities that include a rooftop club house, gym, and a beautiful landscaped terrace garden and splash pool providing a relaxing experience in the middle of the city.

Aarey Greens provides a quality comfort living at its finest and you can enjoy your leisure time by seeing lush green surroundings with mystical landscape. Aarey Greens is on the Station Rd connecting Western Express Highway and Goregaon East Railway Station.

Living at Aarey Greens, you would be just half a km away from Goregaon East Railway Station, 300 meters from WEH and 5 minutes from the Oberoi Metro Station.

Work Close to Home : Nirlon Knowledge Park is just 1.8 Kms from Aarey Greens. Oberoi Commerz 1 and upcoming Oberoi Commerz 2 & 3 are less than 1 km from the site. There are many upcoming commercial buildings along the WEH between Andheri and Goregaon which is expected to create large number of high profile jobs close your home at Aarey Greens.

The Project Aarey Green Apartment is around 150000 Sq ft built up area.

Project Undertaken

Upcoming Projects

CAMA SRA Projects (Project name yet to be proposed)

Residential Project



The Project CAMA SRA Project is situated at CTS No. 532(PT) Cama Industrial Estate, Shanti Nagar, Cama Estate, Walbhat Road, Goregaon (E), Mumbai - 400063.

It is located at Indira Nagar, Shanti Nagar. Its Slum Rehabilitation Projects at Cama. The project is G + 35 stories building mixed user of commercial and Residential building. It is situated in Cama Industrial Estate near close to Western Express Highway. It is very close to the Ram Mandir Railway Station and Goregaon (E) Railway Station. It is also very close to Hub Mall, Oberoi Mall, Nesco Metro Station.

Indulge in lush green luxury, rooftop gym, clubhouse, plunge pool and garden. CAMA SRA Projects

offers world class amenities that include a rooftop club house, gym, and a beautiful landscaped terrace garden and splash pool providing a relaxing experience in the middle of the city.

CAMA SRA Projects provides a quality comfort living at its finest and you can enjoy your leisure time by seeing lush green surroundings. CAMA SRA Projects is on the Station Rd connecting Western Express Highway and Goregaon East Railway Station.

Living at CAMA SRA Projects, you would be just 10 minutes away from Goregaon East Railway Station, 5 minutes away from Ram Mandir Station, 5 minutes to NESCO Metro Station and NESCO Exhibition Center, 300 meters from Western Express Highway.

Work Close to Home : Nirlon Knowledge Park is just 1.8 Kms from CAMA SRA Projects. Oberoi Commerz 1 and upcoming Oberoi Commerz 2 & 3 are less than 1 km from the site. There are many upcoming commercial buildings along the WEH between Andheri and Goregaon which is expected to create large number of high profile jobs close your home at CAMA SRA Projects.

The project CAMA SRA Projects is around 300000 Sq ft built up area.

Upcoming Projects

SVARNA ROSEMARY (IOD No:- CHE /CTY-4809/G/N/337(NEW)IOD)

Residential Project



The Project Svarna Rosemary Apartment is situated at Address : Fp No 600, L J Road Cross No. 2, Near St Micheal Church, Mahim, Mumbai. Svarna Rosemary is a premium residential project in Mahim. Svarna Rosemary is centrally located in Mahim, very close to Mahim Railway station, near famous St. Micheal Church Mahim. It is close to Dadar. It is located in the premium High Class Christian and Maharshtrian Locality. Best of the worship places such as Sonawala Agiary, St. micheal church, Siddhivinayak temple are all in the close proximity. Upcoming Metro Sation is just one minute walk. Restaurants, Shopping, Airport, Commercial complex, Dadar Market and Mumbai's foremost and rapidly developing financial and professional Business District, Bandra Kurla complex. Svarna Rosemary provides a quality comfort living at its finest and you can enjoy your leisure time by seeing lush green Roof Top Terrace Garden and an unobstructed view of Mahim Bay, Sea View .

Dadar Shivaji Park, Dadar Sports Complex is in the near by vicinity. Work close to your Home: The complex is just 1.5 KM from BKC, Mumbai's foremost and rapidly developing financial and professional Business District, Bandra Kurla Complex. Great Connectivity Located just minutes away from the Western express high way which connects all sectors of Mumbai. The project provides adaptable planned project layout, elegant lobby interiors and exteriors all in solid foundation. Roof Top Gymnasim, Stack 4 DP Car Parking System, Mesmerizing Elevation, World Class Lifts. Svarna Rosemary is also situated within a 20 minute drive from domestic airport and one minute walk from the Metro station .It has a good connectivity in all aspects. The Project Svarna Rosemary is around 30000 Sq ft built up area.

Project Undertaken

Upcoming Projects

SAI ELEGANCE (New Mumbai Project)

Residential Project



Sai Elegance is a premium Residential project in upcoming premium residential locality in Ulwe.

The building shall be equipped with all modern Amenities including: 24 x 7 power back up for common facilities & essential services. Marble/Premium Vitrified Tiles Flooring in every room Wooden flooring in Bed Rooms. Provision for Split AC Unit. Granite Platform in kitchen. Anti Skid Flooring and Glazed/Designer wall tiles in bathrooms Modern Sanitary Ware, Jaquar or equivalent make Bath Fittings. Entrance gate with security cabin and 24 x 7 security provision on the Main Entrance gate. Video Door Phone security system with Intercom Facility Spacious lobbies with energy efficient fluorescent lamps Ample, efficient Podium Parking space.

The Projects Sai Elegance is around 20000 Sq ft built up area.

Upcoming Projects

PAWNA LAND OF HEAVENS (Outside Mumbai Project)

Residential Project



An Abode that transcends the conventional boundaries of life and lets you experience the aura of divine ecstasy, solace, relaxation, rejuvenation and a sense of pure beings on the five planes of life, viz. physical, vital, emotional, intellectual and spiritual. The 70 acre of table top land surrounded by the Western Ghats hill tops, lush green greenery and breathtaking view of the Pawna lake creates a fairytale world of trance. The project offers ½ and 1 acres of virgin pieces of land along with Dam and Valley view Wooden Chalets, Concrete bungalows.

Tropical Bali Style Villas. The layout of the project is designed to create an ecstatic feeling of aristocratic lifestyle augmented by natural beauty and total privacy. Come and experience the aura of wellbeing, vibrant vitality, eternal bliss, profound wisdom and divine love in your lifestyle at Land of Heaven!

Project Undertaken

Upcoming Projects

Pawana Land Of Heaven (Outside Mumbai Project)

Super Luxury Farm Villa Bungalow Plots



An Abode that transcends the conventional boundaries of life and lets you experience the aura of divine ecstasy, solace, relaxation, rejuvenation and a sense of pure beings on the five planes of life, viz. physical, vital, emotional, intellectual and spiritual. The 60 acre of table top land surrounded by the Western Ghats hill tops, lush green greenery and breathtaking view of the Pawna lake creates a fairytale world of trance.

The project offers ½ and 1 acres of virgin pieces of land along with Dam and Valley view Wooden Chalets, Concrete bungalows.

Tropical Bali Style Villas. The layout of the project is designed to create an ecstatic feeling of aristocratic lifestyle augmented by natural beauty and total privacy. Come and experience the aura of wellbeing, vibrant vitality, eternal bliss, profound wisdom and divine love in your lifestyle at Land of Heaven!

The land overlooks a large lake in one side, a small lake on the other side and valley and mountain range on the remaining two sides. It is a very beautiful site and 60% of the land is hilltop plateau. Remaining is sloping land starting from lake shore & leading to the hilltop plateau. It is conceptualized to be a plotted development with one acre and half acre villa plots.

We will also have a running kitchen and a in-house horticulture team to take care of the organic garden & lawn of individual villas.

Upcoming Projects

Pawana Land Of Heaven (Outside Mumbai Project)

Luxurious Resort & Spa



The project will also have a Tropic Resort & SPA and Clubhouse on 6-8 Acre area. The Clubhouse will house a fully equipped Gym, Infinity Swimming Pool, Tennis court, Spa, Yoga center etc.

Tropic Resort & Spa, a luxurious elegant four-star resort to be built in a subtle blend of tropical and modern architecture and offers a marvelous ambiance for a truly wonderful and relaxing vacation. A beautiful setting among Lands of Heaven project with the most breath taking views of the warm and wonderful Pawna Lake and Western Ghats. The unique combination of Beautiful Air conditioned Rooms and Luxury Bathrooms coupled with Great Hospitality, breath taking scenery and the wonderful climate will make you want to come again and again to this magical place.

The couples-themed Tropical Resort shall offer 10 luxurious Deluxe Lake Access, 5 Deluxe Lake View and 10 Superior Lake View rooms. The room facilities to be tailored to meet the guests' needs; separate shower and bathtub with hot and cold water, LCD TV, DVD player, TV satellite channels, Tea and coffee-making facilities, bathrobes, fully-stocked minibar, IDD phone, private safety box in room. The resort shall also provide internet access in room and a separate internet room, a restaurant, a swim-up bar, tour desk, mail service, taxi service and doctor on call 24 hours along with wheelchair access to the rooms.

Individual commitment to a group effort
that is what makes
a team work,
a company work,
a society work,
a civilization work.

PROMOTERS

Virendra Tiwari

Mr. Tiwari is a reputed Builder. His humility and simplicity has over shadowed his personal achievements. He was one of the most reputed Criminal Lawyers in Mumbai during 80s and 90s. He was also head of advocates' union. Mr. Tiwari is a B.A. LLB from Allahabad University. In 1990 he left practicing law and became a developer using his keen knowledge of land and land related issues. Since then he has developed numerous properties in Andheri, Goregaon and Jogeshwari. Mr. Tiwari is very well known for his Philanthropic nature. Mr. Tiwari has always given a clean and clear path to the company and has become a father figure Guru and an expert advisor for the company. This legal knowledge and experience it has always helped to get a clean and clear titled project for the company and never the company has faced any litigation till date.



Deepak V. Agarwal

Mr. Deepak V. Agarwal is a commerce graduate from Mumbai university and has done his fabrication designing course from Sasmira at Worli. He has his fabric weaving unit in Bhiwandi Thane district & his company name is Matulene Export & has been doing good business in some of the major international export market and has recently joined the construction industry with the view and prospective of expansion of his business in various fields. He is the head of finance department in our company.





Svarna Realities LLP

Builders | Contractors | Developers | Real Estate

PROMOTERS

Raghu M Poojari

Mr. Raghu Poojari is a reputed Builder / Hotelier and Business Entrepreneur . He also has keen interest in the Hospitality and Hotel Industry. Originally from Mangalore, Mr. Poojari is based out of Mumbai for last 40 years. Mr. Poojari also runs many premium eateries across Mumbai and has been affiliated in social work and upliftment of his Billava community.



Sachin R Poojari

Mr. Sachin R. Poojari has done his M.COM, L.L.B from Mumbai university and is an advocate by profession & has been related to the construction industry for the last 15 years & his forte is in getting the land title clear to the best of his knowledge and his abilities. He has been helping the Mr. Raghu M. Poojari in day to day construction activities and project development. He has the capacity to assess the project and bring out the best in a project. His experience analytical ability and bold decision have served the company well since it has been established.



Mangesh Tiwari

Mr. Mangesh Tiwari has done his graduation from Mumbai University. He has been into construction industry since 15 years. He has been helping Mr. Virendra Tiwari in day-to-day activities of project development. He has the capacity to assess the project and bring out the best in project. His knowledge and experience has always help the company for success.



OUR TEAM & ASSOCIATES

PROJECT MANAGEMENT CONSULTANT (PMC)

- Milind Parekh

Arham Constrotech

Address:- Manisha", Ashanagar, Nasik Road – 422 101

PROJECT CO-ORDINATOR

Head Of Liasoning

1. Mr. Amit D. Medhekar

Address: 5/125, Chatrapati Shahu Sadan, Mahadev Palav Marg, Near Currey Road Station Currey Road (W), Mumbai - 400 013.

2. Mr. Nilesh K. Ghatge

Address : Ambedkar Nagar, Gaondevi Road, Poisar, Kandivali (E), Mumbai - 400 101.

OFFICE ADMIN

Head of Finance

1. Prerana Dhavde

Accounts Executive

Address:- B-138/2, Government Colony, Bandra (E), Mumbai - 400 051.

2. Sayali Sawant

Account Assistance

Address:- 302/A, Sankalpa Siddhi Bldg, Aarey Road, Check Naka, Goregaon (E), Mumbai - 400 063.

Advocate | Solicitors | Legal Advisors

- Advocate Satish Nagvekar

Address: 502, 5th Floor, Goregaon Pappilon CHS LTD, L.T. Road No. 3, Off M. G. Road, Tilak Nagar, Goregaon (w), Mumbai-400 062.

- J. B. Consultant

Address: Aditya Heritage, Behind Inorbit Mall, Off Link Road, Mind Space, Malad (w), Mumbai- 400064.

- Advocate Shailendra Singh

Address: 507, Aditya Heritage, Behind Inorbit Mall, Off Link Road, Mind Space, Malad (w), Mumbai- 400064.

- Fox Mandal & Associates

Address: The Capital, A-1204-D, G Block, C-70, Bandra Kurla Complex, Bandra (E), Mumbai - 400 051.

- Mukesh Jain & Associates

Advocate Mukesh Jain

Address: Pinnacle Corporate Park, 401E, 4th Floor Building No. 19-A, Complex, Bandra Kurla complex, Bandra (W), Mumbai - 400 051.



ARCHITECTS

- **Abhijit Mehta**

Address:- 101, Matru Vatsalya, V.P. Road, Andheri (W), Mumbai - 400 058.

- **Hemant Sharma & Associates**

Address:- 4/D-6, Gajmukh CHS Ltd, Ganesh Nagar, Kandivali (E), Mumbai - 400 067.

- **Nilesh Makhwana**

Address:- 102, Shreenathji CHS, 56th Road, T.P.S. III, Opp. Gayatri Bldg, Borivali (W), Mumbai - 400 092.

- **A. V. Vora & Associates**

Address:- 1, Neelanjani, Prathana Samaj Road, Vile Parle (E), Mumbai - 400 057.

(SRA Architect)

- **Suraj Sawant**

Address:- Yogeshwar Bldg, N. M. Joshi Marg, Lower Parel (E), Mumbai - 400 012.

- **Sheetal Nikhare (M/s. S.S. Associates)**

Address:- 1103, 11th floor, Opal Square, Near MIDC, Wagle Estate, Thane (W).

MEP Consultant

- **LKM ENGG. CONSULTANT**

Kartik Maharaj

Address:- 366, Gr. Floor, Alankar Society Bldg. No. 5, Shivaji Nagar, Aazad Maidan, M. G. Road, Goregaon (W), Mumbai - 400 104.

- **ELECTROMECH CONSULTANTS PVT. LTD.**

Rupesh Ganguly

Address: 105/106 1st Floor, Siddharth Darshan Dada Patil wadi B cabin Area, Mumbai-400062.

- **RCC Consultant**

Sameer Sawant

Address:- A/10 Ratnagar Society, 4 Banglows, J. P. Road, Andheri (W), Mumbai-400053.

- **ASC CONSULTANTS**

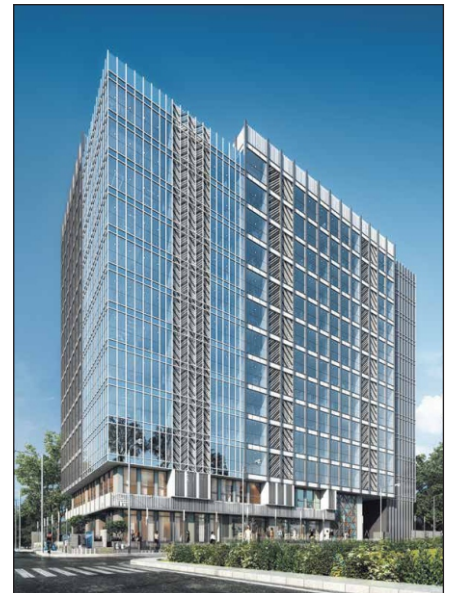
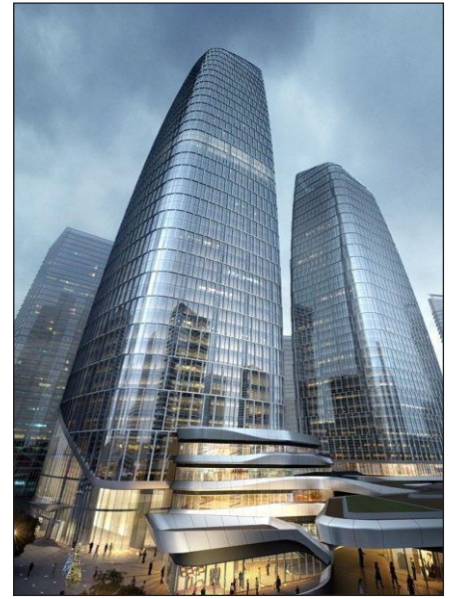
Vikas Gokhale

Address:- 207, Lodha Supremus II, Road No 22, Wagle Estate, Thane West - 400 604.

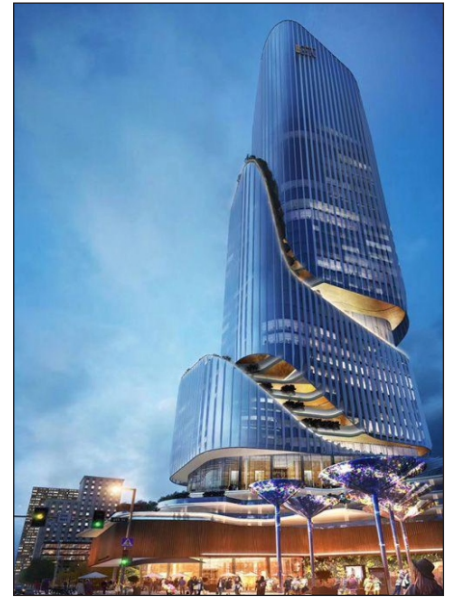
- **M. R. PATIL CONSULTING ENGINEERS PVT. LTD.**

Address: 101, Matushree Apt, 196, Sir M. V. Road, Near Natraj Studio, Andheri (E), Mumbai - 400 069.

Future Lies In Our Hands



Dream. Create. Inspire.





Svarna Realities LLP

A member of

MCHI CREDAI

SVARNA REALTIES LLP

G/1, C-Wing, Green Lawns Apts., Opp. St. Pious College,
Aarey Road, Goregaon (E), Mumbai - 400 063.

E: svarnarealtiesllp@gmail.com | W: www.svarnarealties.com

C: +91 98706 96975 / 70459 00155 / 93214 82838